

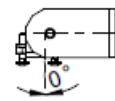
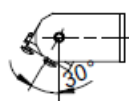
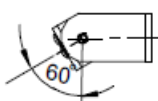
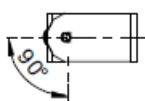
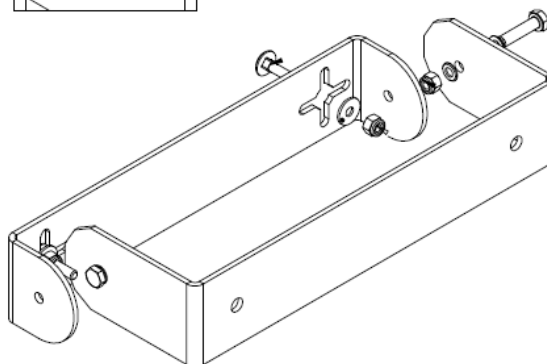
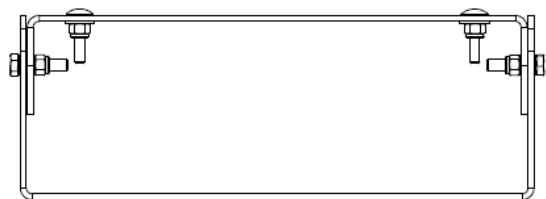
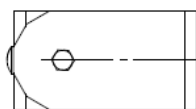
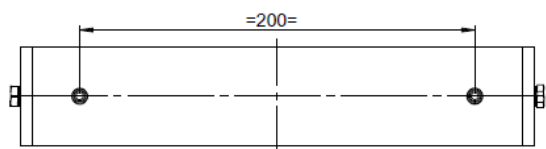
ROTATING SUPPORT

DESCRIPTION

To facilitate the installation of the INHELIUM[®] luminaire, we have designed a rotating support. These are U-profiles.

TECHNICAL CHARACTERISTICS

- ⇒ Material: Aluminum AW 5754.
- ⇒ Brake nuts M5 ISO 10511 Inox A-2.
- ⇒ Wide washers M5 A2 ISO 7089 Inox A-2.
- ⇒ Washers M5 ISO 7093 Inox A-2.
- ⇒ Redy Cab Screw Tail Tail M5x20 ISO 8677 Stainless Steel A2.
- ⇒ Hexagonal Cable Screw M5x20 ISO 4017 Stainless Steel A-2.



MOUNTING POSITIONS